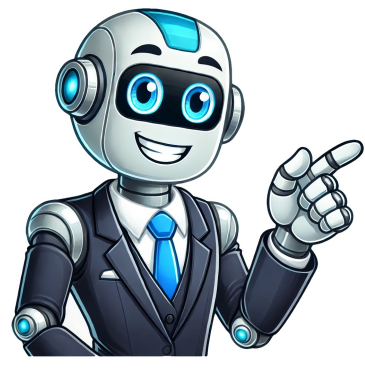


I'm not a bot



The Suzuki V-Strom 650 is a versatile and powerful motorcycle that combines elements of both sport and touring capabilities. Here are some key specifications: * Engine: The bike features a 645cc, four-stroke liquid-cooled V-twin engine with double overhead cams, producing 66 horsepower at 8,800 RPM. * Weight and Dimensions: The Suzuki V-Strom 650 weighs around 469 pounds (213 kg) and measures 2275mm in length, 835mm in width, and 1405mm in height. * Suspension and Brakes: The bike features a telescopic front suspension with oil-damped travel, and a link-type rear suspension with single shock and coil spring. It also boasts dual disc brakes at the front and a single disc brake at the rear. * Fuel Tank Capacity: The V-Strom 650 has a fuel tank capacity of 20.06 liters (5.30 US gallons). * Performance: The bike can reach a top speed of 115 mph (185 km/h) and accelerate from 0-62 mph in approximately 6 seconds. Overall, the Suzuki V-Strom 650 is designed for both on-road and off-road adventures, making it an excellent choice for those seeking a versatile and reliable motorcycle experience. The Suzuki V-Strom 650 is an adventure touring motorcycle that combines strength in one area for adaptability to various riding conditions, including commuting, cruising, and off-road riding. It features a standard riding posture, fuel injection, and an aluminum chassis. The bike has a loyal following worldwide and outsells its larger counterparts, the Suzuki V-Strom 1000 and 1050, as well as its smaller counterpart, the Suzuki V-Strom 250. The V-Strom 650 has a six-speed transmission with a 645cc engine from Suzuki's SV650 sport bike. It features an upright riding posture that contributes to its handling characteristics. The engine is a liquid-cooled, four-stroke V-twin with four valves per cylinder and intake and exhaust valving each with their own camshaft. The DL650 engine uses a plastic outer clutch cover and engine sprocket cover for reduced weight and noise, as well as Suzuki's proprietary SCEM plated cylinders. The bike has a fast-idle control eliminating the need for a separate fast-idle control. It also features Suzuki Dual Throttle Valve (SDTV) fuel-injection and exhausts via a two-into-one exhaust system with a catalytic converter in the muffler. The DL650 uses a stiff, twin-spar aluminum frame and swingarm that accommodates a rear Showa mono-shock with rebound and hydraulic preload adjustment. It has a 19-inch front wheel and is categorized as a dual sport, sport enduro tourer, street/adventure, commuter, or entry-level bike. The Suzuki V-Strom 650, also known as the DL650, is an impressive bike that has received numerous accolades for its exceptional performance and versatility. It boasts a 17-inch rear wheel and features a compact analog step-motor speedometer and tachometer with LED illumination, as well as a digital LCD unit displaying odometer, trip meter, coolant temperature gauge, fuel gauge, and more. An adjustable windshield allows for movement of up to 50 mm (2.0 in), while a small underseat compartment provides storage space for tools, gloves, or an owner's manual. The bike has been praised by Motorcyclist magazine as one of the "ten best" bikes under \$10,000 and has earned the title "Alpenkoenig" (King of the Alps) twice consecutively in German Motorrad magazine's trans-alp multi-bike test. Reviewers have commended its comfort, fuel range, engine, and handling, while noting some drawbacks with its brakes and corrosion resistance. The DL650 has undergone several updates over the years, including the addition of ABS (Anti-lock braking system) and changes to its styling and specifications. The 2012 model introduced a minor facelift and revised instrument cluster, featuring a digital speedometer and larger display. Despite some minor flaws, the V-Strom 650 remains an exceptional choice for riders seeking a reliable and capable machine. Some notable features of the DL650 include: * A compact analog step-motor speedometer and tachometer with LED illumination * Digital LCD unit displaying odometer, trip meter, coolant temperature gauge, fuel gauge, and more * Adjustable windshield allowing movement of up to 50 mm (2.0 in) * Small underseat compartment providing storage space for tools, gloves, or an owner's manual * ABS (Anti-lock braking system) available on some models * Revised instrument cluster featuring a digital speedometer and larger display on the 2012 model Overall, the Suzuki V-Strom 650 is an impressive bike that offers exceptional performance, versatility, and reliability. Its numerous accolades and reviews from reputable sources make it an excellent choice for riders seeking a capable machine. The Suzuki V-Strom 650XT ABS features an updated design, including a beak-like front cowl and lightweight wire-spoked aluminum rims. The bike also comes with knuckle covers to support harsh condition riding and an engine under cowlng for added adventure feel. The base model DL650 is now labeled as the "Sport Adventure Tourer" and comes with two versions: the base and the XT. The XT features tubeless tires, adjustable traction control, and throttle assist, making it ideal for long-distance touring. The bike's design has been refined over the years, with the addition of new features such as an intercompatible luggage rack with the updated DL1000 model. In 2017, Suzuki introduced a Euro4-compliant version of the DL650, which includes improved safety features and more durable components. The V-Strom 650 is designed to be versatile, suitable for various riding environments including urban, canyon, highway, and light off-road riding. It has been praised by critics and riders alike for its balance of performance, comfort, and practicality, making it an ideal choice for beginners, commuters, and long-distance tourers. The Suzuki V-Strom 650 is a reliable and versatile motorcycle that's perfect for touring, commuting, or casual rides. It features a comfortable riding position, a flexible engine character, and excellent fuel economy. The bike has been engineered to achieve worldwide emission standards while delivering stellar performance. With its low weight and trim chassis, the V-Strom 650 is controllable and financially accessible. The engine of the Suzuki V-Strom 650 is based on the SV650 design, but it's been tuned for strong power delivery across a wide range of RPMs. The bike also comes with advanced features like fuel injection and electronic ignition. In terms of specifications, the Suzuki V-Strom 650 has: * A 645cc DOHC engine * Liquid cooling * Fuel injection * Electronic ignition * A 6-speed transmission * Chain final drive * Aluminum twin spar frame * 43mm telescopic front suspension and link-type rear suspension The bike is available in various color schemes, including a Candy Daring Red paint job for the 2021 model year. For 2022, the base model V-Strom 650 will be joined by two new options: a pearl vigour blue body with white decals, and a glass sparkle black scheme with black cast aluminum wheels and a yellow beak graphic. Overall, the Suzuki V-Strom 650 is an excellent choice for riders who want a reliable, versatile motorcycle that's perfect for daily commutes or long-distance adventures. The Yamaha V-Strom features a sleek design with a slim rear section that allows riders to touch down at stops. The fuel tank has undergone internal updates, ensuring the same gasoline capacity for both state-specific models. The two-up seat boasts smooth and slip-resistant surfaces, along with an embossed logo. Electrical Features include adjustable LED backlighting on the multifunction instrument panel. LCD readouts provide various data, including odometer, dual trip meter, traction control modes, and gear position. Switching between readings can be done using the left handlebar switch. Additional features like ABS alerts and a freeze warning icon warn of icy road conditions. A strong three-phase charging system powers the 10Ah maintenance-free battery for easy starting and accessory power. A dedicated fuse is located under the seat. The headlamps feature bright, vibration-resistant LEDs, while the tail and brake lights are also bright and clear. An additional 12-volt DC outlet is mounted on the inner dash. The bike's frame consists of a lightweight, rigid aluminum structure with smooth handling performance and stability. The front forks have adjustable preload, while the rear suspension features rebound damping adjustment. The wheels are shod in Adventure-spec tires for excellent performance. The braking system includes dual 310mm disc brakes up front and a single 260mm disc brake at the rear. ABS monitors wheel speed to match braking to available traction. A lightweight luggage rack is also featured, along with various Genuine Suzuki Accessories options.

Suzuki v strom 650 specs 2013. Suzuki v strom 650 specs 2012. Suzuki v strom 650 specs 2020. Suzuki v strom 650 specs 2015. Suzuki v strom 650 specs 2017. Suzuki v strom 650 specs 2006. Suzuki v strom 650 specs 2016. Suzuki v strom 650 specs 2023. Suzuki v strom 650 specs 2005. Suzuki v strom 650 specs 2004. Suzuki v strom 650 specs 2008. Suzuki v strom 650 specs 2007. Suzuki v strom 650 specs 2024. Suzuki v strom 650 specs 2009. Suzuki v strom 650 specs 2018.