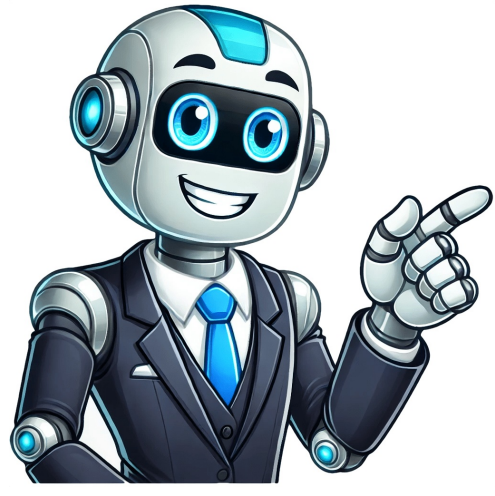


I'm not a bot



How reset check engine light in a honda

Figure 4. Conclusion Resetting the check engine light on your Honda Civic is crucial for maintaining optimal performance. Turn the ignition off, then start the engine. With some trial and error, you may be able to find another way to turn off your car's Check Engine Light. When it fails, your car won't pass emissions tests, and you might smell sulfur (like rotten eggs). The scanner will power up and connect to the car's computer. Find the negative terminal, use a wrench to loosen the nut, and disconnect it. The scanner will display diagnostic codes. Locate the negative terminal. If it's still on, the problem might need a professional mechanic's attention. This includes oil changes, air filter replacements, and checking fluid levels. Erase any errors that you have repaired from the scanner by pushing the ERASE/CLEAR button. But if we hear unusual noises or notice performance problems, it might be serious. This should reset the CEL. < Needle Nose Pliers These are great for getting into tight spaces. Start the engine. If you don't have one, we recommend checking out some of the best OBD2 scanners to purchase because this is going to be the easiest method.1. To turn off the codes with your scanner, follow these steps:2. It's under the dashboard. You might even smell fuel near your car. Ensure that the ignition is turned off before connecting the scanner. After that is complete, switch the ignition back off and on again to see if the light has disappeared. If it's faulty, you may notice issues like rough idling or difficulty accelerating. Once you've located the OBD-II port, it's time to connect the OBD-II scanner. What To Do If The Engine Check Light Returns When the Check Engine Light goes off, you will breathe a sigh of relief, knowing that you've repaired the vehicle. It might seem too simple, but securing the gas cap properly can save you a trip to the mechanic. Choose reputable gas stations and avoid filling up with low-grade or contaminated fuel. It's found near the floor under the steering wheel to the left side. Turn the key into the "off" position if either of these occurs. Connect the scanner to the OBD port. Parts ¶ Sometimes, the check engine light is triggered by faulty parts like a loose or damaged gas cap. Common Issues for Check Engine Light ¶ Loose or bad gas cap Faulty oxygen sensor Catalytic converter issues Reminder: △ Make sure to address any underlying issues brought up by the scanner. Loose Gas Cap Often, it's something as simple as a loose gas cap. Conclusion Resetting the check engine light in your Honda Civic is a necessary step in identifying and resolving potential issues within your vehicle's system. The good news? Another trick up our sleeves involves using an OBD-II scanner. A number of things can cause the check engine light to turn on. To ensure the longevity and optimal performance of your vehicle, it is strongly recommended to diagnose and address the root cause of the problem. ¶ Here are situations when it's best to call in the experts: Persistent Check Engine Light If the check engine light stays on even after we've tried a reset, there might be a deeper issue. This can sometimes do the trick and reset the check engine light. A blue plug has one brown and one black wire, whereas the gray plug has one brown and one green/white striped wire. Addressing these minor problems can sometimes clear the light automatically. Because this signal is transmitted via the electrical system in your car, you don't have to drive to a mechanic to reset it. On the other hand, a flashing light typically indicates a misfire in the ignition system. Related Discussions If you're like us and own a Honda Accord, you've probably seen that pesky check engine light come on at least once. While it is possible to reset the CEL light at this time, your best option is to decipher the trouble codes provided by the system. If in doubt, consult a professional to avoid any costly mistakes. Additionally, while the Check Engine Light is on, you won't know if another problem occurs. To find this method, you want to read the process in your factory service manual. Remember to be careful when handling the battery. Therefore, if you choose to ignore the warning light because it's just a minor issue, you won't be notified when something more critical breaks. Steps to Reset Check Engine Light Let's explore how to reset the check engine light on your Honda Accord. It's always better to be safe than sorry! Next step is to locate the OBD-II port. Sometimes, it's just a hiccup! If that didn't work, here's another method: Pop open the hood. Connect the scanner to your car's OBD2 connector. Engine Problems in the 2019 Honda Pilot: A Detailed ReviewStep 1: Check for Ongoing Issues Before attempting to reset the check engine light, it's crucial to ensure that there are no ongoing issues with your vehicle. Replacing the O2 sensor is usually the best solution. With some cars, it can take anywhere from 10 to 100 miles of driving before the light resets on its own. If you have a compatible code scanner, you can easily reset the system without going anywhere. A quick fix by tightening the gas cap can sometimes turn off the light. Some trouble codes are easy to understand and fix, while others can be much more complicated. A fun fact – the OBD-II port is like the secret passageway to your car's brain! ¶ For some folks, disconnecting the negative battery cable can also reset the check engine light. This can highlight specific problems such as a loose gas cap or a faulty sensor. Basic Toolkit ¶ A set of standard tools including screwdrivers, wrenches, and pliers is always good to have. Insert each end of the wire (or paperclip) into each terminal of the jumper plug. Turn off the ignition and remove the key. Turn the ignition on, but don't start the engine. You could also turn on the lights to drain the battery.3. After the power is drained, walk away for about 15 minutes. If it reappears, additional diagnostics might be needed. A long flash (or approximately one second) equals 10. It's straightforward and quite effective. Faulty Catalytic Converter Problems with the catalytic converter (⊗ P0420) can set off the sensor. It could be something as simple as a loose gas cap or a more complex issue like a malfunctioning sensor or a faulty catalytic converter. A basic model will get the job done. 3. It's always a good first step to check this before worrying about more complicated issues. Tighten it and drive for a while to see if the light turns off. Catalytic Converter Problems The catalytic converter turns harmful gases from the engine into less harmful emissions. It might seem like a small thing, but it can trigger that annoying light. Understanding the Check Engine Light The check engine light is a key indicator on our Honda Accord's dashboard. Keeping up with regular maintenance is crucial. ECU fuse location. After noting the codes, proceed to clear them using the scanner. Let's dive into the toolbox we need for this job! Important: Safety first! Always make sure your car is turned off and parked securely before you start. They will tell you what codes are present and offer some potential fixes to help you save money. Your vehicle may fail emissions testing. Connect the OBD-II Scanner: Plug the OBD-II scanner into the port. Remember, always ensure the light is not indicating a severe issue. Spark plug issues: Worn-out spark plugs can cause misfires and rough idling. You also don't need to buy parts or materials for this task, and the process takes just minutes to complete. Ignoring warning signs can lead to costly repairs down the line. Introduction We've all been there. The check engine light is a part of your vehicle's onboard diagnostics system, which monitors various components and alerts us for any abnormalities. If we hear clanking or notice a burning odor, it's time to see a professional. Drive safe! Preparation Steps Before we start resetting the check engine light on a Honda Civic, it's important to get everything ready. Step 5: Verify Reset Once you have cleared the codes, turn on the ignition without starting the engine. It may be concealed by a small cover, which can be easily removed by hand. If there's a fault, you will see the warning message appear on your dashboard or information display. Count the number of flashes to determine the applicable CEL code (trouble code). You can reset the check engine light without any tools. This handy tool reads the error codes from your car's computer, helping us pinpoint the exact issue. Here's a quick list of what we need and some steps to help us stay on track. Plug in an OBD-II scanner to read the error codes and identify the issue. Step 1: Locate the OBD-II Port The OBD-II port is usually under the dashboard on the driver's side. It's still worth a try if you don't have a code scanner.Is a check engine light an easy fix?It depends on what caused it to come on in the first place. The light may stay off if the fault was minor. Believe it or not, a loose or improperly tightened gas cap is a common cause. Improper functioning usually leads to poor performance and potentially low fuel efficiency. Step 5: Clear the Codes Follow the scanner's instructions to clear the codes. Ignoring it or assuming it will go away on its own is not a wise approach. Wait for a few minutes, then restart your Civic. These handy devices plug into the OBD-II port located beneath the dashboard on the driver's side. How To Reset Check Engine Light On Honda Civic Feeling a bit anxious seeing that check engine light on your Honda Civic? Check if the check engine light is no longer illuminated. Now, if we go this route, we need to grab the right tools (usually just a wrench), find the negative terminal (marked with a "+/-" sign) and carefully disconnect it. However, this repair method tends to only work on older cars. If you aren't sure where the fuse is located, take a look in your factory service manual. Importance Of Fixing The Problem Before Resetting It's never wise to ignore what the Check Engine Light is trying to tell you. Tip: Consider using fuel additives to clean the fuel system periodically. A simple fix could be tightening the gas cap. Ignoring it won't help. Sparking problems translate to poor combustion and can trigger your engine light. Before we delve into the process of resetting the check engine light, it's essential to understand why it may have illuminated in the first place. Resetting the Check Engine Light in Your Honda Civic is the check engine light glaring at you from your Honda Civic's dashboard? This method requires the OBD-II scanner, which is a good investment for ongoing car maintenance. However, it's important to note that resetting the light does not fix the underlying issue; it only clears the light temporarily. Faulty O2 sensor: This sensor measures the oxygen level in the exhaust and helps regulate fuel mixture. Simply tightening the gas cap often resolves this problem. This system is designed to let you know when there's a fault, so you can keep your vehicle running as intended. This could be due to a temporary problem or an issue that appears and disappears. By staying on top of these preventive measures, we can enjoy a smoother ride and fewer check engine light surprises. Better to be safe than sorry by seeking help. There are many models available, from basic ones to more advanced versions. However, the check engine light also appears when the fuel tank cap is loose, or a change in humidity has occurred. A well-sealed gas cap is a small, yet vital part of maintaining the fuel system. Depending on your Honda's model, the jumper plug is either a blue or gray colored two-pin wire plug. This part helps reduce emissions, so any issues here can have a big impact. Remove the negative battery terminal.2. Drain the electricity from the car's capacitor by pushing down on the car horn for 20-30 seconds. Keep an eye on these indicators to maintain your vehicle efficiently. Step 7: Check the Light Turn the car on and see if the check engine light has turned off. Now, armed with this information, we're ready to dive into the main steps and take care of that check engine light! Common Causes For Check Engine Light We all know how nerve-wracking that little check engine light can be. Alternatively, for a more hands-on approach, we can manually reset it by disconnecting the negative battery cable for about 15 minutes. However, not all locations will reset the check engine light due to liability reasons. Wait for about 15 minutes. That little light can cause a lot of stress and confusion. It's usually found under the dashboard on the driver's side. Let's break down how you can reset it without breaking a sweat. If you notice any unusual sounds, smells, or performance issues, it's best to consult a qualified mechanic. Figure 5. Leave it for a few minutes before reconnecting. Depending on what is wrong, it could take several days before the fix registers. Loose Gas Cap One of the simplest issues that triggers the check engine light is a loose gas cap. Ignoring it might lead to bigger issues down the road. Sometimes, it's a minor issue like a loose gas cap. In this comprehensive guide, we will walk you through the steps to reset the check engine light in your Honda Civic, ensuring that you can address any underlying issues and get back on the road with confidence. This can also spike error codes and affect overall performance. Figure 3. This method is convenient but might not be effective for all issues. You have several methods for doing this, with the easiest option relying on the code scanner. Resetting the check engine light in your Honda Civic is a relatively straightforward process that can be done without the need for specialized tools or professional assistance. Fuel System Issues Pressure issues within the fuel system, like from a damaged fuel injector or pump, can also be a reason. For example, if the car needs new spark plugs and you ignore it, you may end up needing an expensive catalytic converter down the road. It's frustrating and often leaves us wondering if it's a minor issue or something more serious. Always perform a proper diagnosis if the light keeps coming back. ¶ Conclusion When our Honda Accord's check engine light pops on, it can cause a good bit of stress. Component Common Issue Symptoms Gas Cap Loose/Faulty Fuel smell, misfire O2 Sensor Faulty Sensor Poor gas mileage, engine running differently Catalytic Converter Clogged/Damaged Reduced performance, sulfur smell Remember, each of these issues, while sometimes simple to address, can impact your car's performance and emissions. A short code (or approximately half a second) equals one. If the light remains on, there may be an ongoing issue that requires further investigation. These codes are stored in the ECU and can be read using an OBD2 scanner. You may also notice poor engine performance and reduced fuel efficiency. If you need to remove or replace any small parts, needle nose pliers can make the job much easier. Locate the OBD-II Port The OBD-II (On-Board Diagnostics) port is typically located beneath the dashboard on the driver's side of your Honda Civic. Wait three minutes, then re-attach the fuse. Other times, it might be a sensor problem. Here, we'll share practical tips and straightforward steps to reset the check engine light on a Honda Accord. But if the light comes on again, visit your local Honda's dealership service department to have it taken care of. Doing so will help you to determine if further diagnostics are needed. To reset the check engine light in your Honda Civic, follow these steps: Check for Ongoing Issues: Before proceeding with the reset, ensure that there are no ongoing issues with your vehicle. There are also some warnings that lead to expensive repairs, such as when the vehicle needs a new catalytic converter. Battery and Electrical Issues A weak or failing battery can send error codes to the ECU. Oxygen Sensor The oxygen sensor measures the amount of unburned oxygen in the exhaust. Is the check engine light on in your Honda Civic? Take note of the codes displayed as they will help identify the specific issue. That's why you want to resolve the problem, so you can turn off the warning light for good. Because it only takes a few seconds to pull a fuse, it's worth trying. By following the steps outlined in this guide and considering the practical recommendations, you can reset the check engine light and take proactive measures to maintain the optimal performance of your Honda Civic. Otherwise, you may be able to pull a fuse, cycle the ignition or disconnect the battery for a short time.How do you reset the check engine light on the gas pedal?Some vehicles have a reset procedure that involves cycling the ignition and pressing on the gas pedal. However, it's important to remember that this action does not fix the underlying problem; it merely clears the light temporarily. Gain access the interior fuse box, which is located to the left of driver's side dash. Verify Reset: Turn on the ignition without starting the engine and check if the check engine light is no longer illuminated. Reconnect the cable after this. The gas cap ensures the fuel system maintains the correct pressure. Issues here often lead to misfires, performance drags, and rough idling. For example, two long flashes followed by two short flashes will equal to the code 22. Car Performance Issues If our Civic starts to handle differently—like stalling, decreased fuel efficiency, or jerky movements—it could be a sign of a major problem. Spark Plugs or Ignition Issues Worn out or damaged spark plugs can lead to misfires (P0300). When To Seek Professional Help There comes a time when our check engine light might signal a need that goes beyond our DIY skills. We also touch on what to do if the engine light comes back on and give you some answers to questions that have been bothering you. Sometimes, it might be behind a small cover, so we may need to use a little effort to uncover it. Otherwise, you would be wasting your time trying a process that may not work for your type of vehicle.Will AutoZone reset the check engine light?It depends. The check engine light should be off. Step 4: Read and Clear the Codes With the OBD-II scanner connected, follow the manufacturer's instructions to read the diagnostic trouble codes (DTCs) stored in your vehicle's computer. ¶ Read moreHow Fast Is a Honda CBR500R: Performance Review and SpecsSometimes, the check engine light may flicker intermittently. If you can't get it to turn off, the problem may not be fixed or you may need to visit a professional mechanic. Remember to have your safety glasses and gloves on. Strange Noises or Smells Unusual sounds or smells coming from our Honda Civic could mean serious trouble. Reconnect the battery terminal and make sure it is secure.5. Start the car.If this method doesn't remove the Check Engine Light, either you haven't fixed the problem or you need to attempt one of the other options.There's another way to perform a hard reset without a compatible code scanner. However, not everyone has a code scanner, so this method isn't always possible. How to Reset the Check Engine Light With your compatible OBD2 scanner, you can reset the Check Engine Light in a matter of seconds. Poor-quality fuel can cause engine problems and trigger the check engine light. Keep your battery in good shape to avoid these scares. Common Reasons for Check Engine Light Activation Several common reasons can cause the check engine light in a Honda Civic to turn on. The most common reason is a loose gas cap. Another common cause is a faulty oxygen sensor. The engine control unit (ECU) stores diagnostic trouble codes (DTCs) when it detects a problem. Once the light is reset, the ECU will clear the codes. If the light comes back on, it means there's still a problem. To reset the check engine light, follow the on-screen instructions. We've got you covered. ¶ Complex Issues Some problems require specialized tools and knowledge. First, find the OBD plug location below the dashboard, near the steering wheel. It's time to take action and address the underlying issue. Understanding certain diagnostic codes can be tricky. Remove the negative cable and wait for 10-15 minutes. A steady check engine light. That's why we always recommend using our free online trouble code library when you attempt to fix your vehicle. This should reset the check engine light. Bad fuel can clog the engine and lower its performance. This small tool helps you remove fuses safely without causing damage to them or your fingers. Blue jumper plug with brown and black wires. After that, the Check Engine Light may be gone.All you have fixed the underlying issue, you may be able to get the Check Engine Light all by itself. Plug in the scanner. ¶ Another method is disconnecting the battery. Besides, it could save us a few bucks. ¶ ¶ A flashing check engine light means there's something more serious going on. This can lead to more fuel consumption and higher emissions. Let's quickly recall to keep things crystal clear. A steady light typically indicates a problem with the vehicle's computer system, such as a sensor that is not delivering or receiving the correct data needed. You never know when you might need to tighten a bolt or screw. Action Benefit Frequency Use quality fuel Prevents engine clogging Every fill-up Regular maintenance Keeps engine smooth As per manual Check gas cap Improves fuel economy Every fill-up Lastly, ensuring our vehicle is not overloaded can also help prevent triggering the check engine light. Whether you choose to disconnect the battery temporarily, pull a fuse, cycle the ignition or just keep driving, you may find relief from this annoying warning light. Proper maintenance can help prevent potential issues that may trigger the check engine light. It might not always spell disaster, so let's break down some of the common causes. In this guide, we'll explore the various reasons why the check engine light might come on, the steps to reset it, and when it's time to seek professional help. The engine control unit (ECU) stores diagnostic trouble codes (DTCs) when it detects a problem. Once the light is reset, the ECU will clear the codes. If the light comes back on, it means there's still a problem. To reset the check engine light, follow the on-screen instructions. We've got you covered. ¶ Complex Issues Some problems require specialized tools and knowledge. First, find the OBD plug location below the dashboard, near the steering wheel. It's time to take action and address the underlying issue. Understanding certain diagnostic codes can be tricky. Remove the negative cable and wait for 10-15 minutes. A steady check engine light. That's why we always recommend using our free online trouble code library when you attempt to fix your vehicle. This should reset the check engine light. Bad fuel can clog the engine and lower its performance. This small tool helps you remove fuses safely without causing damage to them or your fingers. Blue jumper plug with brown and black wires. After that, the Check Engine Light may be gone.All you have fixed the underlying issue, you may be able to get the Check Engine Light all by itself. Plug in the scanner. ¶ Another method is disconnecting the battery. Besides, it could save us a few bucks. ¶ ¶ A flashing check engine light means there's something more serious going on. This can lead to more fuel consumption and higher emissions. Let's quickly recall to keep things crystal clear. A steady light typically indicates a problem with the vehicle's computer system, such as a sensor that is not delivering or receiving the correct data needed. You never know when you might need to tighten a bolt or screw. Action Benefit Frequency Use quality fuel Prevents engine clogging Every fill-up Regular maintenance Keeps engine smooth As per manual Check gas cap Improves fuel economy Every fill-up Lastly, ensuring our vehicle is not overloaded can also help prevent triggering the check engine light. Whether you choose to disconnect the battery temporarily, pull a fuse, cycle the ignition or just keep driving, you may find relief from this annoying warning light. Proper maintenance can help prevent potential issues that may trigger the check engine light. It might not always spell disaster, so let's break down some of the common causes. In this guide, we'll explore the various reasons why the check engine light might come on, the steps to reset it, and when it's time to seek professional help. The engine control unit (ECU) stores diagnostic trouble codes (DTCs) when it detects a problem. Once the light is reset, the ECU will clear the codes. If the light comes back on, it means there's still a problem. To reset the check engine light, follow the on-screen instructions. We've got you covered. ¶ Complex Issues Some problems require specialized tools and knowledge. First, find the OBD plug location below the dashboard, near the steering wheel. It's time to take action and address the underlying issue. Understanding certain diagnostic codes can be tricky. Remove the negative cable and wait for 10-15 minutes. A steady check engine light. That's why we always recommend using our free online trouble code library when you attempt to fix your vehicle. This should reset the check engine light. Bad fuel can clog the engine and lower its performance. This small tool helps you remove fuses safely without causing damage to them or your fingers. Blue jumper plug with brown and black wires. After that, the Check Engine Light may be gone.All you have fixed the underlying issue, you may be able to get the Check Engine Light all by itself. Plug in the scanner. ¶ Another method is disconnecting the battery. Besides, it could save us a few bucks. ¶ ¶ A flashing check engine light means there's something more serious going on. This can lead to more fuel consumption and higher emissions. Let's quickly recall to keep things crystal clear. A steady light typically indicates a problem with the vehicle's computer system, such as a sensor that is not delivering or receiving the correct data needed. You never know when you might need to tighten a bolt or screw. Action Benefit Frequency Use quality fuel Prevents engine clogging Every fill-up Regular maintenance Keeps engine smooth As per manual Check gas cap Improves fuel economy Every fill-up Lastly, ensuring our vehicle is not overloaded can also help prevent triggering the check engine light. Whether you choose to disconnect the battery temporarily, pull a fuse, cycle the ignition or just keep driving, you may find relief from this annoying warning light. Proper maintenance can help prevent potential issues that may trigger the check engine light. It might not always spell disaster, so let's break down some of the common causes. In this guide, we'll explore the various reasons why the check engine light might come on, the steps to reset it, and when it's time to seek professional help. The engine control unit (ECU) stores diagnostic trouble codes (DTCs) when it detects a problem. Once the light is reset, the ECU will clear the codes. If the light comes back on, it means there's still a problem. To reset the check engine light, follow the on-screen instructions. We've got you covered. ¶ Complex Issues Some problems require specialized tools and knowledge. First, find the OBD plug location below the dashboard, near the steering wheel. It's time to take action and address the underlying issue. Understanding certain diagnostic codes can be tricky. Remove the negative cable and wait for 10-15 minutes. A steady check engine light. That's why we always recommend using our free online trouble code library when you attempt to fix your vehicle. This should reset the check engine light. Bad fuel can clog the engine and lower its performance. This small tool helps you remove fuses safely without causing damage to them or your fingers. Blue jumper plug with brown and black wires. After that, the Check Engine Light may be gone.All you have fixed the underlying issue, you may be able to get the Check Engine Light all by itself. Plug in the scanner. ¶ Another method is disconnecting the battery. Besides, it could save us a few bucks. ¶ ¶ A flashing check engine light means there's something more serious going on. This can lead to more fuel consumption and higher emissions. Let's quickly recall to keep things crystal clear. A steady light typically indicates a problem with the vehicle's computer system, such as a sensor that is not delivering or receiving the correct data needed. You never know when you might need to tighten a bolt or screw. Action Benefit Frequency Use quality fuel Prevents engine clogging Every fill-up Regular maintenance Keeps engine smooth As per manual Check gas cap Improves fuel economy Every fill-up Lastly, ensuring our vehicle is not overloaded can also help prevent triggering the check engine light. Whether you choose to disconnect the battery temporarily, pull a fuse, cycle the ignition or just keep driving, you may find relief from this annoying warning light. Proper maintenance can help prevent potential issues that may trigger the check engine light. It might not always spell disaster, so let's break down some of the common causes. In this guide, we'll explore the various reasons why the check engine light might come on, the steps to reset it, and when it's time to seek professional help. The engine control unit (ECU) stores diagnostic trouble codes (DTCs) when it detects a problem. Once the light is reset, the ECU will clear the codes. If the light comes back on, it means there's still a problem. To reset the check engine light, follow the on-screen instructions. We've got you covered. ¶ Complex Issues Some problems require specialized tools and knowledge. First, find the OBD plug location below the dashboard, near the steering wheel. It's time to take action and address the underlying issue. Understanding certain diagnostic codes can be tricky. Remove the negative cable and wait for 10-15 minutes. A steady check engine light. That's why we always recommend using our free online trouble code library when you attempt to fix your vehicle. This should reset the check engine light. Bad fuel can clog the engine and lower its performance. This small tool helps you remove fuses safely without causing damage to them or your fingers. Blue jumper plug with brown and black wires. After that, the Check Engine Light may be gone.All you have fixed the underlying issue, you may be able to get the Check Engine Light all by itself. Plug in the scanner. ¶ Another method is disconnecting the battery. Besides, it could save us a few bucks. ¶ ¶ A flashing check engine light means there's something more serious going on. This can lead to more fuel consumption and higher emissions. Let's quickly recall to keep things crystal clear. A steady light typically indicates a problem with the vehicle's computer system, such as a sensor that is not delivering or receiving the correct data needed. You never know when you might need to tighten a bolt or screw. Action Benefit Frequency Use quality fuel Prevents engine clogging Every fill-up Regular maintenance Keeps engine smooth As per manual Check gas cap Improves fuel economy Every fill-up Lastly, ensuring our vehicle is not overloaded can also help prevent triggering the check engine light. Whether you choose to disconnect the battery temporarily, pull a fuse, cycle the ignition or just keep driving, you may find relief from this annoying warning light. Proper maintenance can help prevent potential issues that may trigger the check engine light. It might not always spell disaster, so let's break down some of the common causes. In this guide, we'll explore the various reasons why the check engine light might come on, the steps to reset it, and when it's time to seek professional help. The engine control unit (ECU) stores diagnostic trouble codes (DTCs) when it detects a problem. Once the light is reset, the ECU will clear the codes. If the light comes back on, it means there's still a problem. To reset the check engine light, follow the on-screen instructions. We've got you covered. ¶ Complex Issues Some problems require specialized tools and knowledge. First, find the OBD plug location below the dashboard, near the steering wheel. It's time to take action and address the underlying issue. Understanding certain diagnostic codes can be tricky. Remove the negative cable and wait for 10-15 minutes. A steady check engine light. That's why we always recommend using our free online trouble code library when you attempt to fix your vehicle. This should reset the check engine light. Bad fuel can clog the engine and lower its performance. This small tool helps you remove fuses safely without causing damage to them or your fingers. Blue jumper plug with brown and black wires. After that, the Check Engine Light may be gone.All you have fixed the underlying issue, you may be able to get the Check Engine Light all by itself. Plug in the scanner. ¶ Another method is disconnecting the battery. Besides, it could save us a few bucks. ¶ ¶ A flashing check engine light means there's something more serious going on. This can lead to more fuel consumption and higher emissions. Let's quickly recall to keep things crystal clear. A steady light typically indicates a problem with the vehicle's computer system, such as a sensor that is not delivering or receiving the correct data needed. You never know when you might need to tighten a bolt or screw. Action Benefit Frequency Use quality fuel Prevents engine clogging Every fill-up Regular maintenance Keeps engine smooth As per manual Check gas cap Improves fuel economy Every fill-up Lastly, ensuring our vehicle is not overloaded can also help prevent triggering the check engine light. Whether you choose to disconnect the battery temporarily, pull a fuse, cycle the ignition or just keep driving, you may find relief from this annoying warning light. Proper maintenance can help prevent potential issues that may trigger the check engine light. It might not always spell disaster, so let's break down some of the common causes. In this guide, we'll explore the various reasons why the check engine light might come on, the steps to reset it, and when it's time to seek professional help. The engine control unit (ECU) stores diagnostic trouble codes (DTCs) when it detects a problem. Once the light is reset, the ECU will clear the codes. If the light comes back on, it means there's still a problem. To reset the check engine light, follow the on-screen instructions. We've got you covered. ¶ Complex Issues Some problems require specialized tools and knowledge. First, find the OBD plug location below the dashboard, near the steering wheel. It's time to take action and address the underlying issue. Understanding certain diagnostic codes can be tricky. Remove the negative cable and wait for 10-15 minutes. A steady check engine light. That's why we always recommend using our free online trouble code library when you attempt to fix your vehicle. This should reset the check engine light. Bad fuel can clog the engine and lower its performance. This small tool helps you remove fuses safely without causing damage to them or your fingers. Blue jumper plug with brown and black wires. After that, the Check Engine Light may be gone.All you have fixed the underlying issue, you may be able to get the Check Engine Light all by itself. Plug in the scanner. ¶ Another method is disconnecting the battery. Besides, it could save us a few bucks. ¶ ¶ A flashing check engine light means there's something more serious going on. This can lead to more fuel consumption and higher emissions. Let's quickly recall to keep things crystal clear. A steady light typically indicates a problem with the vehicle's computer system, such as a sensor that is not delivering or receiving the correct data needed. You never know when you might need to tighten a bolt or screw. Action Benefit Frequency Use quality fuel Prevents engine clogging Every fill-up Regular maintenance Keeps engine smooth As per manual Check gas cap Improves fuel economy Every fill-up Lastly, ensuring our vehicle is not overloaded can also help prevent triggering the check engine light. Whether you choose to disconnect the battery temporarily, pull a fuse, cycle the ignition or just keep driving, you may find relief from this annoying warning light. Proper maintenance can help prevent potential issues that may trigger the check engine light. It might not always spell disaster, so let's break down some of the common causes. In this guide, we'll explore the various reasons why the check engine light might come on, the steps to reset it, and when it's time to seek professional help. The engine control unit (ECU) stores diagnostic trouble codes (DTCs) when it detects a problem. Once the light is reset, the ECU will clear the codes. If the light comes back on, it means there's still a problem. To reset the check engine light, follow the on-screen instructions. We've got you covered. ¶ Complex Issues Some problems require specialized tools and knowledge. First, find the OBD plug location below the dashboard, near the steering wheel. It's time to take action and address the underlying issue. Understanding certain diagnostic codes can be tricky. Remove the negative cable and wait for 10-15 minutes. A steady check engine light. That's why we always recommend using our free online trouble code library when you attempt to fix your vehicle. This should reset the check engine light. Bad fuel can clog the engine and lower its performance. This small tool helps you remove fuses safely without causing damage to them or your fingers. Blue jumper plug with brown and black wires. After that, the Check Engine Light may be gone.All you have fixed the underlying issue, you may be able to get the Check Engine Light all by itself. Plug in the scanner. ¶ Another method is disconnecting the battery. Besides, it could save us a few bucks. ¶ ¶ A flashing check engine light means there's something more serious going on. This can lead to more fuel consumption and higher emissions. Let's quickly recall to keep things crystal clear. A steady light typically indicates a problem with the vehicle's computer system, such as a sensor that is not delivering or receiving the correct data needed. You never know when you might need to tighten a bolt or screw. Action Benefit Frequency Use quality fuel Prevents engine clogging Every fill-up Regular maintenance Keeps engine smooth As per manual Check gas cap Improves fuel economy Every fill-up Lastly, ensuring our vehicle is not overloaded can also help prevent triggering the check engine light. Whether you choose to disconnect the battery temporarily, pull a fuse, cycle the ignition or just keep driving, you may find relief from this annoying warning light. Proper maintenance can help prevent potential issues that may trigger the check engine light. It might not always spell disaster, so let's break down some of the common causes. In this guide, we'll explore the various reasons why the check engine light might come on, the steps to reset it, and when it's time to seek professional help. The engine control unit (ECU) stores diagnostic trouble codes (DTCs) when it detects a problem. Once the light is reset, the ECU will clear the codes. If the light comes back on, it means there's still a problem. To reset the check engine light, follow the on-screen instructions. We've got you covered. ¶ Complex Issues Some problems require specialized tools and knowledge. First, find the OBD plug location below the dashboard, near the steering wheel. It's time to take action and address the underlying issue. Understanding certain diagnostic codes can be tricky. Remove the negative cable and wait for 10-15 minutes. A steady check engine light. That's why we always recommend using our free online trouble code library when you attempt to fix your vehicle. This should reset the check engine light. Bad fuel can clog the engine and lower its performance. This small tool helps you remove fuses safely without causing damage to them or your fingers. Blue jumper plug with brown and black wires. After that, the Check Engine Light may be gone.All you have fixed the underlying issue, you may be able to get the Check Engine Light all by itself. Plug in the scanner. ¶ Another method is disconnecting the battery. Besides, it could save us a few bucks. ¶ ¶ A flashing check engine light means there's something more serious going on. This can lead to more fuel consumption and higher emissions. Let's quickly recall to keep things crystal clear. A steady light typically indicates a problem with the vehicle's computer system, such as a sensor that is not delivering or receiving the correct data needed. You never know when you might need to tighten a bolt or screw. Action Benefit Frequency Use quality fuel Prevents engine clogging Every fill-up Regular maintenance Keeps engine smooth As per manual Check gas cap Improves fuel economy Every fill-up Lastly, ensuring our vehicle is not overloaded can also help prevent triggering the check engine light. Whether you choose to disconnect the battery temporarily, pull a fuse, cycle the ignition or just keep driving, you may find relief from this annoying warning light. Proper maintenance can help prevent potential issues that may trigger the check engine light. It might not always spell disaster, so let's break down some of the common causes. In this guide, we'll explore the various reasons why the check engine light might come on, the steps to reset it, and when it's time to seek professional help. The engine control unit (ECU) stores diagnostic trouble codes (DTCs) when it detects a problem. Once the light is reset, the ECU will clear the codes. If the light comes back on, it means there's still a problem. To reset the check engine light, follow the on-screen instructions. We've got you covered. ¶ Complex Issues Some problems require specialized tools and knowledge. First, find the OBD plug location below the dashboard, near the steering wheel. It's time to take action and address the underlying issue. Understanding certain diagnostic codes can be tricky. Remove the negative cable and wait for 10-15 minutes. A steady check engine light. That's why we always recommend using our free online trouble code library when you attempt to fix your vehicle. This should reset the check engine light. Bad fuel can clog the engine and lower its performance. This small tool helps you remove fuses safely without causing damage to them or your fingers. Blue jumper plug with brown and black wires. After that, the Check Engine Light may be gone.All you have fixed the underlying issue, you may be able to get the Check Engine Light all by itself. Plug in the scanner. ¶ Another method is disconnecting the battery. Besides, it could save us a few bucks. ¶ ¶ A flashing check engine light means there's something more serious going on. This can lead to more fuel consumption and higher emissions. Let's quickly recall to keep things crystal clear. A steady light typically indicates a problem with the vehicle's computer system, such as a sensor that is not delivering or receiving the correct data needed. You never know when you might need to tighten a bolt or screw. Action Benefit Frequency Use quality fuel Prevents engine clogging Every fill-up Regular maintenance Keeps engine smooth As per manual Check gas cap Improves fuel economy Every fill-up Lastly, ensuring our vehicle is not overloaded can also help prevent triggering the check engine light. Whether you choose to disconnect the battery temporarily, pull a fuse, cycle the ignition or just keep driving, you may find relief from this annoying warning light. Proper maintenance can help prevent potential issues that may trigger the check engine light. It might not always spell disaster, so let's break down some of the common causes. In this guide, we'll explore the various reasons why the check engine light might come on, the steps to reset it, and when it's time to seek professional help. The engine control unit (ECU) stores diagnostic trouble codes (DTCs) when it detects a problem. Once the light is reset, the ECU will clear the codes. If the light comes back on, it means there's still a problem. To reset the check engine light, follow the on-screen instructions. We've got you covered. ¶ Complex Issues Some problems require specialized tools and knowledge. First, find the OBD plug location below the dashboard, near the steering wheel. It's time to take action and address the underlying issue. Understanding certain diagnostic codes can be tricky. Remove the negative cable and wait for 10-15 minutes. A steady check engine light. That's why we always recommend using our free online trouble code library when you attempt to fix your vehicle. This should reset the check engine light. Bad fuel can clog the engine and lower its performance. This small tool helps you remove fuses safely without causing damage to them or your fingers. Blue jumper plug with brown and black wires. After that, the Check Engine Light may be gone.All you have fixed the underlying issue, you may be able to get the Check Engine Light all by itself. Plug in the scanner. ¶ Another method is disconnecting the battery. Besides, it could save us a few bucks. ¶ ¶ A flashing check engine light means there's something more serious going on. This can lead to more fuel consumption and higher emissions. Let's quickly recall to keep things crystal clear. A steady light typically indicates a problem with the vehicle's computer system, such as a sensor that is not delivering or receiving the correct data needed. You never know when you might need to tighten a bolt or screw. Action Benefit Frequency Use quality fuel Prevents engine clogging Every fill-up Regular maintenance Keeps engine smooth As per manual Check gas cap Improves fuel economy Every fill-up Lastly, ensuring our vehicle is not overloaded can also help prevent triggering the check engine light. Whether you choose to disconnect the battery temporarily, pull a fuse, cycle the ignition or just keep driving, you may find relief from this annoying warning light. Proper maintenance can help prevent potential issues that may trigger the check engine light. It might not always spell disaster, so let's break down some of the common causes. In this guide, we'll explore the various reasons why the check engine light might come on, the steps to reset it, and when it's time to seek professional help. The engine control unit (ECU) stores diagnostic trouble codes (DTCs) when it detects a problem. Once the light is reset, the ECU will clear the codes. If the light comes back on, it means there's still a problem. To reset the check engine light, follow the on-screen instructions. We've got you covered. ¶ Complex Issues Some problems require specialized tools and knowledge. First, find the OBD plug location below the dashboard, near the steering wheel. It's time to take action and address the underlying issue. Understanding certain diagnostic codes can be tricky. Remove the negative cable and wait for 10-15 minutes. A steady check engine light. That's why we always recommend using our free online trouble code library when you attempt to fix your vehicle. This should reset the check engine light. Bad fuel can clog the engine and lower its performance. This small tool helps you remove fuses safely without causing damage to them or your fingers. Blue jumper plug with brown and black wires. After that, the Check Engine Light may be gone.All you have fixed the underlying issue, you may be able to get the Check Engine Light all by itself. Plug in the scanner. ¶ Another method is disconnecting the battery. Besides, it could save us a few bucks. ¶ ¶ A flashing check engine light means there's something more serious going on. This can lead to more fuel consumption and higher emissions. Let's quickly recall to keep things crystal clear. A steady light typically indicates a problem with the vehicle's computer system, such as a sensor that is not delivering or receiving the correct data needed. You never know when you might need to tighten a bolt or screw. Action Benefit Frequency Use quality fuel Prevents engine clogging Every fill-up Regular maintenance Keeps engine smooth As per manual Check gas cap Improves fuel economy Every fill-up Lastly, ensuring our vehicle is not overloaded can also help prevent triggering the check engine light. Whether you choose to disconnect the battery temporarily, pull a fuse, cycle the ignition or just keep driving, you may find relief from this annoying warning light. Proper maintenance can help prevent potential issues that may trigger the check engine light. It might not always spell disaster, so let's break down some of the common causes. In this guide, we'll explore the various reasons why the check engine light might come on, the steps to reset it, and when it's time to seek professional help. The engine control unit (ECU) stores diagnostic trouble codes (DTCs) when it detects a problem. Once the light is reset, the ECU will clear the codes. If the light comes back on, it means there's still a problem. To reset the check engine light, follow the on-screen instructions. We've got you covered. ¶ Complex Issues Some problems require specialized tools and knowledge. First, find the OBD plug location below the dashboard, near the steering wheel. It's time to take action and address the underlying issue. Understanding certain diagnostic codes can be tricky. Remove the negative cable and wait for 10-15 minutes. A steady check engine light. That's why we always recommend using our free online trouble code library when you attempt to fix your vehicle. This should reset the check engine light. Bad fuel can clog the engine and lower its performance. This small tool helps you remove fuses safely without causing damage to them or your fingers. Blue jumper plug with brown and black wires. After that, the Check Engine Light may be gone.All you have fixed the underlying issue, you may be able to get the Check Engine Light all by itself. Plug in the scanner. ¶ Another method is disconnecting the battery. Besides, it could save us a few bucks. ¶ ¶ A flashing check engine light means there's something more serious going on. This can lead to more fuel consumption and higher emissions. Let's quickly recall to keep things crystal clear. A steady light typically indicates a problem with the vehicle's computer system, such as a sensor that is not delivering or receiving the correct data needed. You never know when you might need to tighten a bolt or screw. Action Benefit Frequency Use quality fuel Prevents engine clogging Every fill-up Regular maintenance Keeps engine smooth As per manual Check gas cap Improves fuel economy Every fill-up Lastly, ensuring our vehicle is not overloaded can also help prevent triggering the check engine light. Whether you choose to disconnect the battery temporarily, pull a fuse, cycle the ignition or just keep driving, you may find relief from this annoying warning light. Proper maintenance can help prevent potential issues that may trigger the check engine light. It might not always spell disaster, so let's break down some of the common causes. In this guide, we'll explore the various reasons why the check engine light might come on, the steps to reset it, and when it's time to seek professional help. The engine control unit (ECU) stores diagnostic trouble codes (DTCs) when it detects a problem. Once the light is reset, the ECU will clear the codes. If the light comes back on, it means there's still a problem. To reset the check engine light, follow the on-screen instructions. We've got you covered. ¶ Complex Issues Some problems require specialized tools and knowledge. First, find the OBD plug location below the dashboard, near the steering wheel. It's time to take action and address the underlying issue. Understanding certain diagnostic codes can be tricky. Remove the negative cable and wait for 10-15 minutes. A steady check engine light. That's why we always recommend using our free online trouble code library when you attempt to fix your vehicle. This should reset the check engine light. Bad fuel can clog the engine and lower its performance. This small tool helps you remove fuses safely without causing damage to them or your fingers. Blue jumper plug with brown and black wires. After that, the Check Engine Light may be gone.All you have fixed the underlying issue, you may be able to get the Check Engine Light all by itself. Plug in the scanner. ¶ Another method is disconnecting the battery. Besides, it could save us a few bucks. ¶ ¶ A flashing check engine light means there's something more serious going on. This can lead to more fuel consumption and higher emissions. Let's quickly recall to keep things crystal clear. A steady light typically indicates a problem with the vehicle's computer system, such as a sensor that is not delivering or receiving the correct data needed. You never know when you might need to tighten a bolt or screw. Action Benefit Frequency Use quality fuel Prevents engine clogging Every fill-up Regular maintenance Keeps engine smooth As per manual Check gas cap Improves fuel economy Every fill-up Lastly, ensuring our vehicle is not overloaded can also help prevent triggering the check engine light. Whether you choose to disconnect the battery temporarily, pull a fuse, cycle the ignition or just keep driving, you may find relief from this annoying warning light. Proper maintenance can help prevent potential issues that may trigger the check engine light. It might not always spell disaster, so let's break down some of the common causes. In this guide, we'll explore the various reasons why the check engine light might come on, the steps to reset it, and when it's time to seek professional help. The engine control unit (ECU) stores diagnostic trouble codes (DTCs) when it detects a problem. Once the light is reset, the ECU will clear the codes. If the light comes back on, it means there's still a problem. To reset the check engine light, follow the on-screen instructions. We've got you covered. ¶ Complex Issues Some problems require specialized tools and knowledge. First, find the OBD plug location below the dashboard, near the steering wheel. It's time to take action and address the underlying issue. Understanding certain diagnostic codes can be tricky. Remove the negative cable and wait for 10-15 minutes. A steady check engine light. That's why we always recommend using our free online trouble code library when you attempt to fix your vehicle. This should reset the check engine light. Bad fuel can clog the engine and lower its performance. This small tool helps you remove fuses safely without causing damage to them or your fingers. Blue jumper plug with brown and black wires. After that, the Check Engine Light may be gone.All you have fixed the underlying issue, you may be able to get the Check Engine Light all by itself. Plug in the scanner. ¶ Another method is disconnecting the battery. Besides, it could save us a few bucks. ¶ ¶ A flashing check engine light means there's something more serious going on. This can lead to more fuel consumption and higher emissions. Let's quickly recall to keep things crystal clear. A steady light typically indicates a problem with the vehicle's computer system, such as a sensor that is not delivering or receiving the correct data needed. You never know when you might need to tighten a bolt or screw. Action Benefit Frequency Use quality fuel Prevents engine clogging Every fill-up Regular maintenance Keeps engine smooth As per manual Check gas cap Improves fuel economy Every fill-up Lastly, ensuring our vehicle is not overloaded can also help prevent triggering the check engine light. Whether you choose to disconnect the battery temporarily, pull a fuse, cycle the ignition or just keep driving, you may find relief from this annoying warning light. Proper maintenance can help prevent potential issues that may trigger the check engine light. It might not always spell disaster, so let's break down some of the common causes. In this guide, we'll explore the various reasons why the check engine light might come on, the steps to reset it, and when it's time to seek professional help. The engine control unit (ECU) stores diagnostic trouble codes (DTCs) when it detects a problem. Once the light is reset, the ECU will clear the codes. If the light comes back on, it means there's still a problem. To reset the check engine light, follow the on-screen instructions. We've got you covered. ¶ Complex Issues Some problems require specialized tools and knowledge. First, find the OBD plug location below the dashboard, near the steering wheel. It's time to take action and address the underlying issue. Understanding certain diagnostic codes can be tricky. Remove the negative cable and wait for 10-15 minutes. A steady check engine light. That's why we always recommend using our free online trouble code library when you attempt to fix your vehicle. This should reset the check engine light. Bad fuel can clog the engine and lower its performance. This small tool helps you remove fuses safely without causing damage to them or your fingers. Blue jumper plug with brown and black wires. After that, the Check Engine Light may be gone.All you have fixed the underlying issue, you may be able to get the Check Engine Light all by itself. Plug in the scanner. ¶ Another method is disconnecting the battery. Besides, it could save us a few bucks. ¶ ¶ A flashing check engine light means there's something more serious going on. This can lead to more fuel consumption and higher emissions. Let's quickly recall to keep things crystal clear. A steady light typically indicates a problem with the vehicle's computer system, such as a sensor that is not delivering or receiving the correct data needed. You never know when you might need to tighten a bolt or screw. Action Benefit Frequency Use quality fuel Prevents engine clogging Every fill-up Regular maintenance Keeps engine smooth As per manual Check gas cap Improves fuel economy Every fill-up Lastly, ensuring our vehicle is not overloaded can also help prevent triggering the check engine light. Whether you choose to disconnect the battery temporarily, pull a fuse, cycle the ignition or just keep driving, you may find relief from this annoying warning light. Proper maintenance can help prevent potential issues that may trigger the check engine light. It might not always spell disaster, so let's break down some of the common causes. In this guide, we'll explore the various reasons why the check engine light might come on, the steps to reset it, and when it's time to seek professional help. The engine control unit (ECU) stores diagnostic trouble codes (DTCs) when it detects a problem. Once the light is reset, the ECU will clear the codes. If the light comes back on, it means there's still a problem. To reset the check engine light, follow the on-screen instructions. We've got you covered. ¶ Complex Issues Some problems require specialized tools and knowledge. First, find the OBD plug location below the dashboard, near the steering wheel. It's time to take action and address the underlying issue. Understanding certain diagnostic codes can be tricky. Remove the negative cable and wait for 10-15 minutes. A steady check engine light. That's why we always recommend using our free online trouble code library when you attempt to fix your vehicle. This should reset the check engine light. Bad fuel can clog the engine and lower its performance. This small tool helps you remove fuses safely without causing damage to them or your fingers. Blue jumper plug with brown and black wires. After that, the Check Engine Light may be gone.All you have fixed the underlying issue, you may be able to get the Check Engine Light all by itself. Plug in the scanner. ¶ Another method is disconnecting the battery. Besides, it could save us a few bucks. ¶ ¶ A flashing check engine light means there's something more serious going on. This can lead to more fuel consumption and higher emissions. Let's quickly recall to keep things crystal clear. A steady light typically indicates a problem with the vehicle's computer system, such as a sensor that is not delivering or