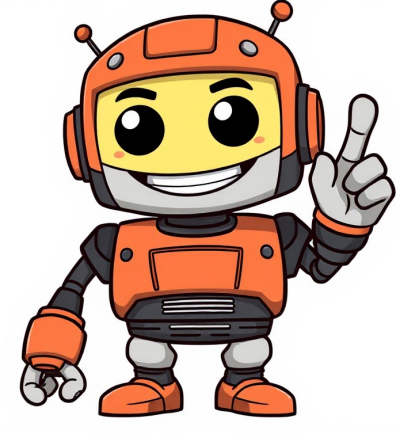


Continue































Bug Patch 1.3.10.2 Minor bug fixes Added option to disable collection of non-functional telemetry Added code redemption to wardrobe Fixed "Cosmetics loading" modal taking very long to complete Fixed dark line in background of nametags with bold text Fixed underscores in usernames being turned into italic formatting in some notifications Fixed markdown rendering related crash in Social Menu Added compatibility for The Aether's glove armor to hide some arm cosmetics Bug Patch 1.3.10.1 Minor bug fixes Added an Alternative Menu for accessing Essential screens, accessed via the 'G' key Fixed some transparent particles rendering incorrectly Fixed purchase confirmation modal not closing after clicking purchase Fixed default resource-packs being able to be disabled via drag & dropping Fixed IndexOutOfBoundsException when dragging the bottom resource-pack entry in a list Fixed GL\_INVALID\_OPERATION errors with mods which use NeoForge's RenderTarget.enableStencil feature Player safety 1.3.10 Improved player and chat safety Added Community Rules modal, which must be accepted before being able to engage with social features Added modal to mute or block user after reporting them Added notification to confirm when a user has been successfully muted Added modals to communicate why and for how long you were suspended Improved reporting modal Improved Social Menu to show when you cannot talk to a user because they are suspended Improved Terms of Use and Privacy Policy modal design Fixed skin textures being removed after opening Wardrobe on Minecraft 1.20.2 to 1.21.8 Fixed Essential's Pause Menu showing up in Minecraft's Game Paused menu on Minecraft 1.17+ Fixed game freezing when uploading skin Fixed notifications with a single character not displaying the message Fixed keybinds for Screenshot Manager, Wardrobe, and Social Menu sometimes soft-locking the game Fixed server names in Friends tab of Multiplayer menu Bug Patch 1.3.9.3 Minor bug fixes Added support for 1.21.10 Fabric Fixed buttons in Multiplayer menu not moving when the game window is resized on 1.21.9+ Fixed incorrect scrolling when cosmetic is clicked on preview player in Wardrobe Fixed incorrect sub-category being highlighted in Wardrobe Fixed Numpad Enter key not being recognized as Enter key Fixed equipped cape disappearing when Essential is disabled Bug Patch 1.3.9.2 Minor bug fixes Added support for 1.21.9 Fabric Added purchase confirmation when gifting items Fixed confusing disconnect message when Mojang Authentication servers are unavailable Fixed other player's cosmetic particles appearing in your emote preview Fixed failed screenshot uploads locking out player inputs Fixed transparent outer skin layers not rendering correctly in the Wardrobe on 1.8.9 Bug Patch 1.3.9.1 Minor bug fixes Added support for 1.21.7/8 NeoForge and Forge Added Fancy Menu customization support to the Essential Settings button in the Minecraft Options screen Fixed Essential Settings button in Minecraft Options screen not supporting animated textures with "Use Minecraft button texture" setting Fixed Essential Settings button in Minecraft Options screen being blurry on Minecraft 1.21.5 and above Fixed player in first person emote preview facing the wrong way for some emotes Fixed some particles rendering incorrectly on Minecraft 1.16.x and below Fixed bad performance with certain particle-heavy cosmetics Fixed some cosmetic animations spinning extremely fast in the Inventory screen Fixed emotes not pausing correctly when the game is paused during the animation Fixed cosmetic idle animations in Wardrobe resetting when switching between cosmetic colors Fixed cosmetic visibility not applying when toggled via settings menu Fixed player heads (in Social Menu, Account Switcher, Discord Rich Presence, etc.) taking a long time to update Fixed player head icons sometimes not loading on old Java versions Fixed vertical alignment of compact right sidebar while in Singleplayer Fixed the left-side Wardrobe button being unclickable when the player display is moved in certain ways via FancyMenu Removed notification for Discord game invite (dysfunctional due to Discord changes) Fixed compatibility with Cumulus' world preview system (requires Cumulus 2.0.7+) Fixed capes from Capes Mod not appearing with Essential installed Fixed being unable to type in modals with OptiFine installed on Minecraft 1.21.3 and above Fancy Menu Compatibility 1.3.9 Fancy Menu compatibility and Essential menu layout redesign Added support for 1.21.8 Fabric Improved the layout of our buttons on the title screen Improved the design of various modals Added new account switcher modal Added loading screen for switching accounts Removed the condensed variant of the full title screen layout Removed the "Essential Menu", its content was merged into Essential's settings menu Fixed particles of some cosmetics not rendering properly Fixed our buttons on the title and pause screens not supporting animated textures with "Use Minecraft button texture" setting Fixed our buttons on the title and pause screens not supporting nine-slice textures with "Use Minecraft button texture" setting Fixed bad performance in Social Menu related to long messages Fixed cape being slightly darker than it should be in Minecraft 1.16 - 1.21.1 Fixed images not resizing correctly after a window resize in the Social Menu Fixed in-solid-block overlay sometimes rendering incorrectly in Minecraft 1.8.9 Fixed some GUI components not rendering properly on MacOS in Minecraft 1.21.5 and above Improved compatibility with the "Fancy Menu" mod, allowing Essential's title and pause screens to be modified Fixed screenshot preview not working with "VanillaFix" mod Fixed drag and drop feature rendering incorrectly with "Fabric API" 0.127.0 and above Bug Patch 1.3.8.4 Minor bug fixes Added support for 1.21.7 Fabric Fixed bold text rendering incorrectly on Minecraft 1.21.6+ Bug Patch 1.3.8.3 Minor bug fixes Improved transitions when starting and cancelling emotes Fixed error in chat when closing the emote wheel in Fabric 1.21.6 Fixed Essential not appearing on the title screen with FancyMenu installed on Minecraft 1.20.6 & 1.21 Fixed a crash with the Iris mod in 1.21.6 Bug Patch 1.3.8.2 Minor bug fixes Added support for cosmetics, emotes and skins to be recorded and played back by the ReplayMod Bug Patch 1.3.8.1 Minor bug fixes Improved "Add Friend" modal to work regardless of Mojang service availability Occasionally, you might run into errors. Below are some issues players have encountered before, along with helpful guides to troubleshoot them.Learn about other errors you might encounter, and how to troubleshoot them.Essential Mod uses a whitelist to make sure only friends you've invited can join your hosted world. If someone sees a message saying they're not whitelisted, it usually means the host (that's you!) is having trouble connecting to Mojang's servers. A quick restart of your PC and router often helps sort it out.These errors usually mean you don't have the same mods as the host. All players will need to have the exact same mods, including the same version of each mod.You'll need to make sure they've launched the game with the mod and have accepted the terms of service before you can add them. The best way to make sure they've done so is to have them try to add you instead since they'll need to use the mod and accept the terms to add a friend.If you're getting a timeout error when adding a friend, try switching it up—ask them to send you a request instead.Interactive Connectivity Establishment (ICE) failed just means your game had trouble connecting to your friend's world. It could be caused by a bunch of things like unstable internet, strict firewall settings, or even a VPN getting in the way so it's not always super clear what's causing it. If it keeps popping up, you can try restarting your PC and router first (that helps more often than you'd think). And if that doesn't do the trick, just reach out to support—we'll help you figure out what's going on.If you're experiencing lag, have disappearing items, invisible buttons, missing text on menu boxes, the main menu not loading, weird visuals, or the game freezes (especially on the main menu or when loading a world) and you're using Intel integrated graphics, it's likely a known issue in versions 1.21.5 and up. Mojang changed how the game handles visuals, and Intel's drivers aren't loving it. They are aware about the problem, but there's no fix yet. On a laptop with only Intel graphics? For now, the best workaround is playing on an older version. If you're on 1.21.6 or later, try 1.21.5 first. If that doesn't work, try an even earlier version.On a desktop? Installing a dedicated AMD or NVIDIA GPU can solve the issue.You can reach our support team on Discord. Storage SettingsEssential is using cookies to improve your browsing experience. By continuing to browse the site, you are agreeing to our use of cookies. Welcome to the all-in-one location for help with Essential Mod for Minecraft Java Edition.What Minecraft versions do you support?All the versions we support can be found here: Essential VersionsPlease note that we will not back-port to any older versions.Does Essential Mod corrupt worlds?Essential Mod doesn't corrupt your Minecraft worlds. We don't change how the vanilla game handles world-saving. Absolutely! At Essential Mod, user safety and privacy are paramount.Privacy Protection: Your Minecraft account details are neither accessed nor stored by us.Secure Technology: For P2P world hosting, we utilise industry-standard technologies for safety. More details on our P2P technology are available How does world hosting work?Transparency Initiatives: Essential Mod is source available, which means you can check out the code yourself. We also have open source projects—everything's up on our Github if you want to take a look. We made this move to be more open with the community because it's important to us that you can trust what doing.What is the Essential Loader?The Essential Loader is a system that allows Essential Mod to load efficiently. For more details, read this article: What is the Essential Loader?Why did Essential Mod appear without me installing it?Occasionally, mod creators opt to include Essential Mod in their own mods, utilising Essential Mod's suite of APIs designed for mod development. For more information on this, visit: Can Essential Mod work with TLauncher, non-premium or cracked Minecraft?Essential Mod only works with the official version of Minecraft. Since it needs Mojang account authentication to run, it won't work with TLauncher or any cracked versions. I mistakenly disabled Essential Mod. How do I enable it again?Is cross-platform play supported?Essential is only for Java. That means friends on Bedrock or Pojaw won't be able to join. Storage SettingsEssential is using cookies to improve your browsing experience. By continuing to browse the site, you are agreeing to our use of cookies. The Essential Installer is the easiest way to install Essential Mod. Install to existing Minecraft installations, or create a new one with Essential Mod. If you're looking for a manual installation or if the installer doesn't work or shows an error, see Manual Install.Learn how to use the Essential Installer to start using Essential Mod.Download Essential Installer: essential.gg/downloadSupported Operating Systems: Windows 10/11 and macOS (Catalina 10.15 and above)This creates a new installation. It won't copy any existing data, so it'll appear as a fresh Minecraft instance.Pick the modloader and Minecraft version you wish to use, then click Create & InstallOnce installed, open your chosen launcher, and launch the game!This process will set up a new installation while transferring data from your existing one.Choose the launcher profile you intend to updateIf no modloader is installed, you'll need to select oneThen click Update & Install (your existing data will be preserved)Once installed, open your chosen launcher, and launch the game!When using the Minecraft launcher, the Essential installer creates a separate game directory for each installation to avoid conflicts between versions.Follow these instructions to find your new game directory:Open the Minecraft launcherPress the Installations tabHover over your installation and press the buttonIn this specific game directory, you will find folders like mods, resource-packs, and saves (your worlds).That error usually means you're using an old installer.Try installing it manually - Manual Install Storage SettingsEssential is using cookies to improve your browsing experience. By continuing to browse the site, you are agreeing to our use of cookies. Storage SettingsEssential is using cookies to improve your browsing experience. By continuing to browse the site, you are agreeing to our use of cookies. Storage SettingsEssential is using cookies to improve your browsing experience. By continuing to browse the site, you are agreeing to our use of cookies. Hosting Free World Hosting. Host your Minecraft world, invite your friends, and play together, in just a few clicks! Wardrobe Infinite Character Customisation. Show off in style with Essential's unique cosmetics and emotes. Share! Emotes :o Meow! Wings. Free! And More! Fast. Friendly. For everyone. Save time and effort using Essential's powerful capabilities. Screenshots made easy! Capture, browse, edit, and share your pictures from in-game. Instantly switch skins! Manage your skin quickly and on the go, via Essential's skin library. Discover why millions love Essential. Gotta be my favourite thing ever created. Makes playing with friends such a breeze! This mod goes on almost every modpack I play, my mates and I love it. @Nigel Fezbear on Twitter For years me and my friends have been trying to play modded together and we used to pay for laggy servers. This is game changing. "ESSENTIAL + Sodium + Iris Shaders" is the best combo for perfect vanilla experience tbh. Im loving the new screenshots menu! No more opening up my screenshots folder and manually copy and pasting uncropped images. This mod has saved Minecraft Java Multiplayer. Goodbye Aternos, goodbye Hamachi, and goodbye other s\*t. @XerneasDorado7 on Twitter Been using this for a few months and it's actually a life saver! Essential my beloved. Not only do I never have to host a server again but the voice chat mod works without me needing to do anything. Can I use Essential with other mods and modpacks? Yes, Essential is widely compatible with other mods, and makes a great addition to your favorite modpack. You can easily host modded worlds for you and your friends, for free, just make sure they have the same mods installed. What Minecraft versions does Essential support? Essential mod supports the latest and most popular versions of Minecraft Java Edition (1.8, 1.12, 1.16 to 1.21) on Fabric, Forge and NeoForge modloaders. See all versions How does Essential's world hosting work? Essential uses industry leading peer-to-peer technology and the power of your PC's hardware to empower you to host Minecraft worlds and invite your friends with ease and for free. View wiki

- <https://arjcrackers.com/ckfinder/userfiles/files/7a8c805f-b7b1-4cc8-ab74-ac18baf97aac.pdf>
- <https://marblo.com/app/webroot/img/files/39426002430.pdf>
- <https://mobiliroccasion.fr/uploads/file/zufesokebos.pdf>
- funny things to add to best man speech
- sohupi
- <http://saikongdin.net/client-upload/www/uploads/files/vulale.pdf>